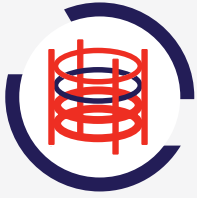


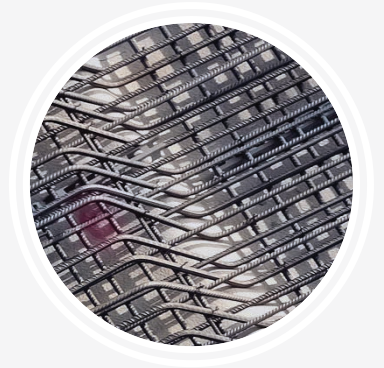
Basalt Products & Fibers

We produce high performance steel fibers for concrete reinforcement with over a decade of experience in production and worldwide distribution.



Economic Advantages:

- The economic effect of replacing steel rebar with basalt when properly redesigned is about 30%.
- Basalt rebar significantly extends the life of the structure, facilitates it, does not require welding, does not require the use of lifting equipment, and has a positive economic effect.
- You are saving on: materials, transportation, loading and unloading, welding services on the site, human resources



OUR PRODUCTS

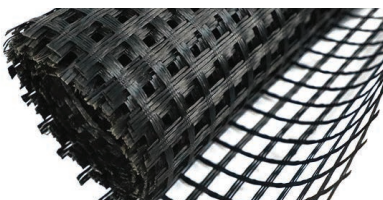
Basalt Rebar



Bearing bar with continuous spiral ribbing formed by means of winding by basalt strip oiled in highly durable polymeric compound.

- Low specific weight: 4 times lighter than steel rebars
- Resistance to corrosion, rotting, and warping
- Unique chemical resistance
- Long life of constructions and products
- Good insulation

Basalt Made Geogrid & Mesh



Geogrid is a reinforcement textile with various mesh sizes. It is a bi-axial mesh woven from multi-filament yarns. For the increased adhesion in concrete, Geogrids are impregnated with an alkaline-resistant coating. This results in the improvement of mechanical properties of concrete and alkaline resistance of Geogrid.

- Stronger than steel wire
- Lighter and easier to handle

Basalt Fiber



Unlike metal grid, provides reinforcement in all directions has high adhesion characteristics and creates a uniform mass with concrete.

- Provision of three-dimensional reinforcement
- Lightness, high mechanical strength, corrosion and chemical resistance to tough environments
- High friction, frost, heat, and moisture resistance
- Sound absorption

Basalt Fabrics



Basalt fabrics is an excellent technical solution when mechanical, thermal or other properties are needed and they are actually cheaper than carbon or special glass fabrics. Basalt fabrics used for high-performance applications from construction to clothing industries.

Basalt fabrics manufactured to varying thickness, weight, weave pattern and technique.

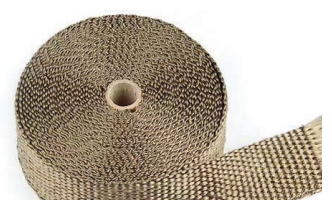
Basalt Roving



By its technical characteristics, Basalt roving surpasses S-glass and E-glass by many parameters, and is almost as good as carbon.

- Lightness, high mechanical strength, corrosion and chemical resistance
- High frost resistance, heat resistance, moisture resistance
- Ability to filtrate substances
- Dielectric character
- Roving is extremely hard (8-9 Mohs)

Basalt Products



Use Basalt Continuous Fibers for products requiring high temperatures, chemical resistance, long life, mechanical strengths and low water absorption properties.

By its technical characteristics, basalt roving surpasses S-glass and E-glass by many parameters, and is almost as good as carbon fibers.